

Welcome



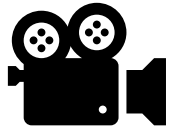
Happier



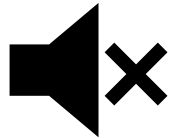
Healthier



More Active



- This session will be recorded



- Please turn your **camera on** and **mute on** (until breakout rooms)



- Type questions into the chat function

Agenda – 8th December 25

Schools
Active
Movement

Supported by
 YOUTH
SPORT
TRUST



Happier



Healthier



More Active

1. DfE tender update
2. SAM subgroup updates
3. SAM subgroup and Board membership
4. SAM membership
5. Well Schools
6. YST Conference

PE & School Sport Partnerships Network

December 2025

Steve Clapperton
Head of Policy and Public Affairs

Recap – government announcement

- In June, the Prime announced the introduction of new School Sports Partnerships to:
 - Build strong partnerships between schools, local clubs and NGBs
 - Identify and break down barriers for children who are less active including girls and children with SEND
 - Ensure inclusive best practice is shared and adopted widely
 - Link to a new Enrichment Framework increasing extra-curricular activities
 - Included within new school profiles

Developments and working timelines

- **Summer** – initial conversations with the sector post-announcement
 - **September** – online market engagement event for a new PE and School Sport Partnerships Network, £15m p/a over 3(+1) years
 - **November** – confirmation of delay to proposed timeline
 - **December** – announcement of further market engagement event
-
- **Early 26** – market engagement event and launch of tender
 - **Spring/Summer 26** – announcement of successful bid
 - **September 26** – new network begins delivery

Youth Sport Trust activity

- **Consortium formed**
 - Alongside Active Partnerships (APNO) and Association for PE (afPE)
- **Listening activity**
 - Town Hall style events
 - Engagement with networks, NGBs, existing SSPs
 - Aligned to activity led by APNO and afPE
- **Engagement with government**
 - Encouraging clarity around future funding
 - Urging direct communication from departments



ADVOCACY

Active support
from the key
stakeholders.
Selling the
narrative

Schools, Politicians, Local
Authority, Public Health, sports
stars and personalities and most
importantly young people.

Advocacy

Town Hall events

Communication with local MPs and stakeholders

We will be meeting as a subgroup in the new year.



STRUCTURES & SUSTAINABILITY

- * Represent variety of structures represented (SGO/PDM/SSP/CIC/Consultant etc)
- * Support network for developing new structures
- * Ensure representation of all involved with a voice

Structures & Sustainability

- Sub Group Members:

Claire Tennyson, Rebecca D'Arcy, Amanda Jack, Sarah Price, Stewart Seymour, Beky Williams, Ali Mapp, Gemma Stokes

- For those interesting in becoming a CIC please go to the SAM hub to watch the recording
- Looking into various topics:
 - Insurance
 - HR advice and support
 - Payroll
 - Solicitors
 - Accountants

Schools
Active
Movement

Supported by
YOUTH
SPORT
TRUST



Happier



Healthier



More Active

Types of Insurance



1. Public / Products Liability:- Injury or property damage caused to third parties (people or business) due to your business activities or products.
2. Employers' Liability Injuries or illnesses suffered by employees as a result of their work. This is legally required if you employ staff.
3. Professional Liability (Also known as Professional Indemnity): Claims made against you for mistakes or negligence in professional services or advice.
4. Management Liability: Claims made against company directors, officers, and senior managers for alleged wrongful acts in managing the company.
5. Entity Defence: Legal defence costs when the company itself (not individuals) is sued—for example, for regulatory investigations or employment disputes.
6. Fidelity: Losses caused by employee dishonesty, such as theft or fraud.
7. Cyber and Data Risks: Cyberattacks, data breaches, and associated costs like recovery, fines, and legal claims.

Cover	Insurance amount	Excess	Annual Premium (exc IPT)
Professional indemnity	£1,000,000	£500	£537.23
Public and products liability	£10,000,000	£250	£447.86
Employers' liability	£10,000,000	£0	£330.89
Insured premises: Live Health and Fitness Friday Street, CHORLEY, PR6 0AA			
Property – contents	£19,964	£250	£77.97
Property – away and in transit	£3,994	£250	£89.13
Property – money	Included	£0	£0.00
Legal protection	£100,000	£0	£51.84
Crisis containment	£25,000	-	£0.00
BusinessHR	Included		£53.57

isation set	Insurer	Cover	Annual Premium																																												
th 17 yees and a lf employed structors, et up as a ce 2017.	HISCOX	<table><tr><th>Cover</th><th>Insurance amount</th><th>Excess</th><th>Annual Premium (exc IPT)</th></tr><tr><td>Professional indemnity</td><td>£1,000,000</td><td>£500</td><td>£537.23</td></tr><tr><td>Public and products liability</td><td>£10,000,000</td><td>£250</td><td>£447.86</td></tr><tr><td>Employers' liability</td><td>£10,000,000</td><td>£0</td><td>£330.89</td></tr><tr><td colspan="4">Insured premises: Live Health and Fitness Friday Street, CHORLEY, PR6 0AA</td></tr><tr><td>Property – contents</td><td>£19,964</td><td>£250</td><td>£77.97</td></tr><tr><td>Property – away and in transit</td><td>£3,994</td><td>£250</td><td>£89.13</td></tr><tr><td>Property – money</td><td>Included</td><td>£0</td><td>£0.00</td></tr><tr><td>Legal protection</td><td>£100,000</td><td>£0</td><td>£51.84</td></tr><tr><td>Crisis containment</td><td>£25,000</td><td>-</td><td>£0.00</td></tr><tr><td>BusinessHR</td><td>Included</td><td></td><td>£53.57</td></tr></table> Vans insured separately	Cover	Insurance amount	Excess	Annual Premium (exc IPT)	Professional indemnity	£1,000,000	£500	£537.23	Public and products liability	£10,000,000	£250	£447.86	Employers' liability	£10,000,000	£0	£330.89	Insured premises: Live Health and Fitness Friday Street, CHORLEY, PR6 0AA				Property – contents	£19,964	£250	£77.97	Property – away and in transit	£3,994	£250	£89.13	Property – money	Included	£0	£0.00	Legal protection	£100,000	£0	£51.84	Crisis containment	£25,000	-	£0.00	BusinessHR	Included		£53.57	Charged premium: £1,588.49 Insurance Premium Tax (IPT): £190.63 Total charged premium: £1,779.12
Cover	Insurance amount	Excess	Annual Premium (exc IPT)																																												
Professional indemnity	£1,000,000	£500	£537.23																																												
Public and products liability	£10,000,000	£250	£447.86																																												
Employers' liability	£10,000,000	£0	£330.89																																												
Insured premises: Live Health and Fitness Friday Street, CHORLEY, PR6 0AA																																															
Property – contents	£19,964	£250	£77.97																																												
Property – away and in transit	£3,994	£250	£89.13																																												
Property – money	Included	£0	£0.00																																												
Legal protection	£100,000	£0	£51.84																																												
Crisis containment	£25,000	-	£0.00																																												
BusinessHR	Included		£53.57																																												
employees on	Allianz	1. Public & Products liability insurance £5m 2. Employers liability £10m 3. Professional indemnity 4. Property insurance SSP Van insured through Zurich	£6,125.28																																												
/ with 5 employees others on a ce basis	Abbeystone (Premier Insurance Services) Policy with Victor	Employers liability £10m, Public Liability £10m, Trustees liability £2m, Professional Liability £5m, Cyber £50k Legal £250k . Our premium is £4,600 per annum	£4600																																												

Name	Organisation	Organisation set up	Insurer	Cover	Annual Premium
Beky Williams	Stride Active	CIC 5 employees on payroll	Insured by Markel, via Mann Broadbent (broker)	Professional - £2m Public - £5m Employers - £10m Management - £250,000 Entity - £25,000 Fidelity - £25,000 Cyber - £50,000	£1,269.16
Kerstine Hogg	Knowlsey SSP	Based in a school 2 employees		only school insurance Department for Education Risk Protection Arrangement (RPA)	

Useful information:

- If employed in a school first action is to check with school what you are covered for as an individual and as a SSP or extended workforce
- Banks often have a dedicated person able to give good advice. - starter business/set up's
- This might be helpful if you are a CIC or trust:
<https://www.markeluk.com/charity-insurance/community-interest-company-trust-insurance>
- Change brokers.... You may be surprised with differences in costs for same cover!



HEALTH & WELL-BEING

- * National Agenda
- * Social/Mental/Physical
- * Data Gathering / Sharing
- * Projects/Organisations /Initiatives (ie Wellschools)

Health & Well Being

- We will continue to take learnings from the well check and accreditation (more info to follow in this meeting) as a guide for our group moving forwards.
- Staff wellbeing has been flagged as an area of concern for many school colleagues. Andy Pope has used Kobaca to get a sense of the current landscape
- We recently had a fabulous presentation from Hussein Khan- South Leicestershire SSP- he is doing some great work with staff well being and we will bring this to life for SAM members in future sessions
- Don't forget about the Corefulness programme- this is having great traction across the country so would recommend this to SAM colleagues.
- If wanted to find out more, please follow this link to a 30-minute recording of the session: <https://corefulness.com/presentation-1094873615/>

Schools
Active
Movement

Supported by
YOUTH
SPORT
TRUST



Staff Wellbeing

Oct 2025 Survey Feedback

Staff Wellbeing Survey - Headlines

29% of staff said their own wellbeing was **not good** and they were **struggling**

39% of staff said they were struggling with **stress levels** and were in **need of support**

The two biggest barriers to positive wellbeing were **Time and Workload**

After stress and burnout, the most requested topic of support was **Menopause** (83% of the staff who completed the survey from primary schools were women)

73% of staff who said they needed support with their wellbeing said **workload** was the biggest factor **affecting them**



PHYSICAL EDUCATION

*The gateway to
lifelong
participation*

*

Physical Education

SAM members are integrally linked to Physical education settings, therefore SAM has a responsibility to 'connect, advocate and share' to support members in their knowledge and understanding of Physical Education.

- PE as the gateway to lifelong participation
- Sharing/Interpreting PE updates (i.e. Ofsted research reviews, curriculum and assessment review)
- Sharing Opportunities (to enhance knowledge & understanding)
- Share Good Practice
- Impact/Evidence (PE & Whole school impact)
- Collaboration with key partners

Current group focus:

Curriculum & Assessment Review - <https://www.gov.uk/government/publications/curriculum-and-assessment-review-final-report>

Youth Sport Trust's response to the report: <https://www.youthsporttrust.org/news-listings/news/new-curriculum-can-start-new-chapter-for-pe-school-sport-and-play-say-sector-leaders>

Association for PE's response to the report: <https://www.afpe.org.uk/news/713905/-Statement-from-Kate-Thornton-Bousfield-CEO-of-the-Association-for-Physical-Education-.htm>

Enrichment – New framework expected soon and will be a future focus for SAM. Youth Sport Trust Enrichment in Action webinar recording available <https://go.youthsporttrust-comms.org/webmail/821183/1345313775/4f577910c64c9bfd5d9536946397bddd9ac0d76bafa16073d9579f4f0d622a89>. Duke of Edinburgh's Award proposes new enrichment benchmarks <https://www.dofe.org/news/model-enrichment-benchmarks/>

SAM Subgroup & Board Membership

**Schools
Active
Movement**

Supported by
 **YOUTH
SPORT
TRUST**



Happier



Healthier



More Active

East and London/South East

Membership

**Schools
Active
Movement**

Supported by
 **YOUTH
SPORT
TRUST**



Happier



Healthier



More Active

Link for new members to sign up on SAM landing page:

<https://www.youthsporttrust.org/join-us/networks/schools-active-movement>



YOUTH
SPORT
TRUST

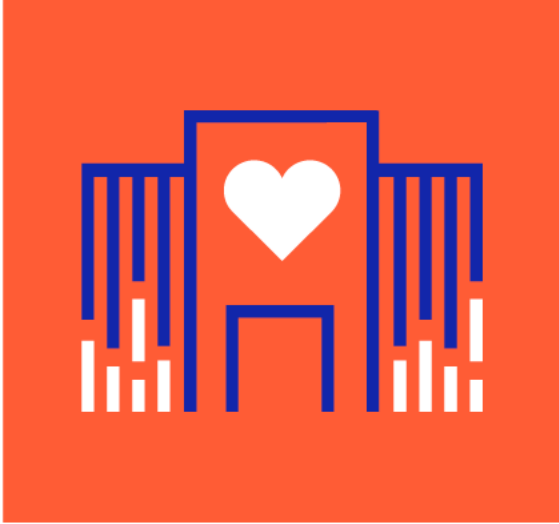
WELL
SCHOOLS



Well Culture. Lead Well. Move Well. Live Well.



The pillars



Well Culture

Senior leaders put health and wellbeing at the heart of the school and create a culture of belonging



Lead Well.

Staff and pupils are empowered to shape and lead their school



Move Well.

Every pupil is prepared physically and mentally for learning and for life



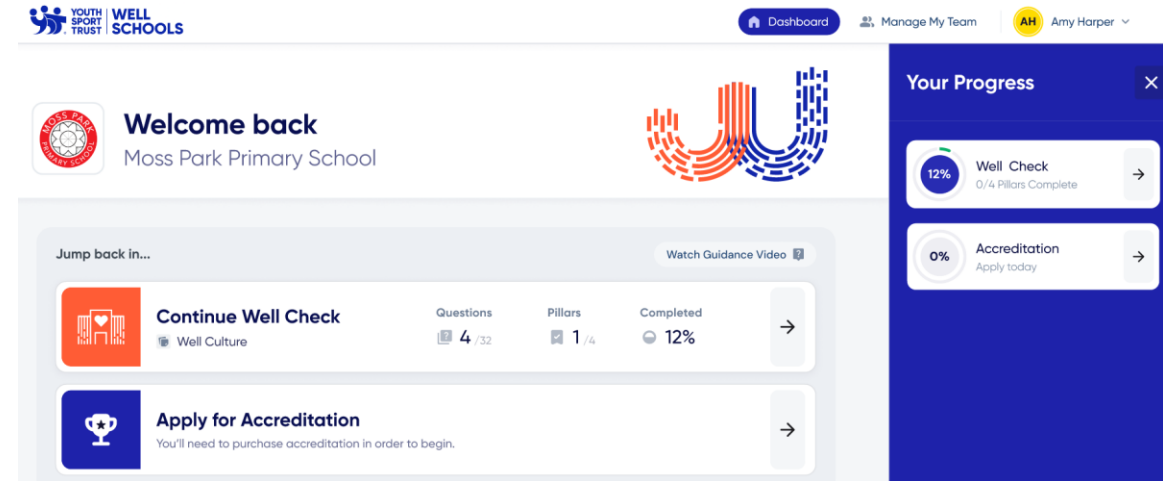
Live Well.

Every pupil is equipped with the essential skills and experiences to thrive in a digital world



Well Check

- Free to access self review tool
- Creates a free development plan
- Always live
- Supports Ofsted and school improvement
- Bespoke to every school
- Relevant for Home Countries
- Signposts to relevant support
- Groups function for MATs/SSPs etc.
- Gateway to Well Schools Accreditation



“ I have been on and completed the Well Check. My professional feedback is that it's bloody brilliant - really slick and easy to use, didn't take long to complete and made me think!

**DAVE MCPARTLIN, HEAD TEACHER
FLAKEFLEET PRIMARY SCHOOL**



Well Culture.



Lead Well.



Move Well.



Live Well.



Group Functionality



Dashboard

Manage Schools

AH Amy Harper

Welcome back

Multi Academy Trust Name



12

Schools Awarded Accreditation



8

Schools Started Accreditation



7

Schools Completed Well Check



Get started...



Well School Trust Information

Lorem ipsum sip dolor lorem ipsum



4/9

Accreditations Purchased

Purchase Accreditations

Schools in Group: Viewed recently

[View all](#)



St Pauls CE Primary Sch...

147874 • M4 7HK

Well Check

Accreditation

Not Started

Not Started



Park View Community S...

147874 • M4 7HK

Well Check

Accreditation

60 Score

★★★★ 4 Stars

Kingsway Primary School

147874 • M4 7HK

Well Check

Accreditation

In Progress

In Progress



Well Schools Guidance

Learn about Well Schools and our recommendations for this check.

Welcome back

St Pauls Primary School



Jump back in...



Continue Well Check

Lead Well

17 / 32



Apply for Accreditation

Recent Activity

[View all](#)

AH

Live Well Edited

4m ago

MP

Move Well Completed

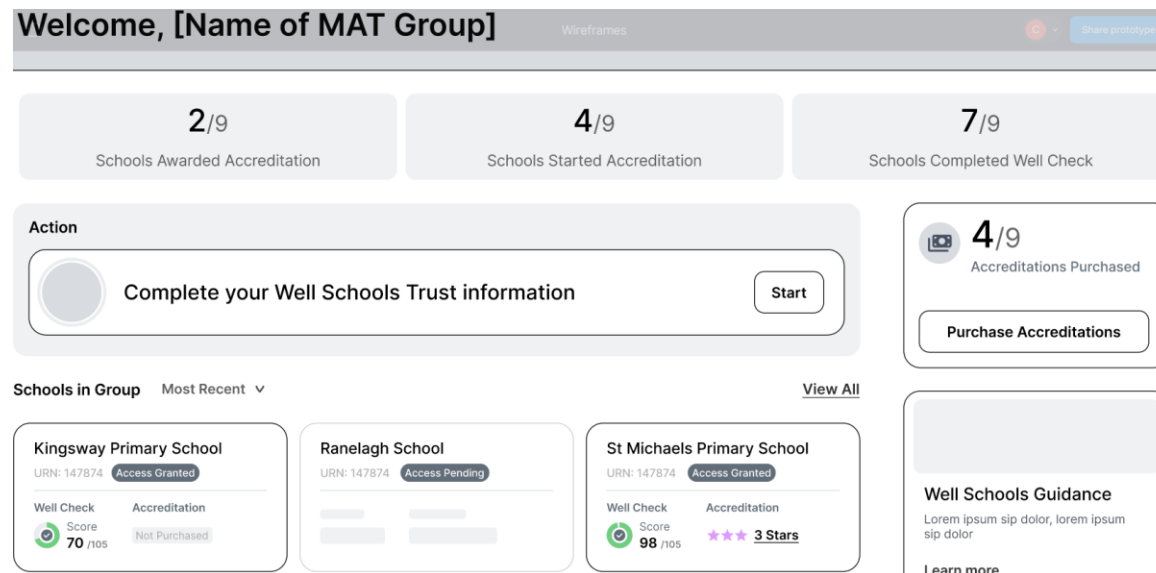
10m ago



YOUTH
SPORT
TRUST

Group Level Plans

- Consolidated plans across individual schools
- Collective areas of strength, improvement and development
- Creation of plans for 12-24 months
- Opportunity to provide centralised evidence against the Accreditation
- Access to packages of support through YST to address areas of need
- Access to trusted partners to support outside of YST's offer



Well Schools Accreditation

- Considers other quality marks and awards
- Demonstrates commitment
- Access to library, networking and resources
- Branding packages included
- Access to coaching
- Peer to peer quality assurance process
- Gateway to additional programmes
- Supported by partner organisations
- Lasts for 2 years



Well School Regional Festivals

March – April 2026

- Understand the principles of a Well School / Trust
- Introduce Youth Sport Trust and our mission / offer
- Engage & learn from existing good practice in Beacon Schools and Trusts
- Build a network within local areas to support and collaborate

Well School Trust Development Programme (2 day residential) –
July 2026





A series of FREE to access virtual webinars aimed at equipping practitioners with the knowledge, skills, and confidence to deliver meaningful and inclusive experiences for young people with SEND.



Bookings now open!

Inclusion Live 2026

Monday 26 January – Friday 30 January 2026



**activity
alliance**
disability
inclusion
sport



Funded by

Department
for Education

nasen
Helping Everyone Achieve

 **Swim
England**



Inclusion Live 2026

activity
alliance
disability
inclusion
sport



Assisted by
Department
for Education

nasen
Helping Everyone Achieve

Swim
England

YOUTH
SPORT
TRUST

Monday 26 January

15:30-16:30



Inspiring inclusion through major sporting events

Tuesday 27 January

15:30-16:30



Unlocking the power of school swimming for young people with SEND

Wednesday 28 January

15.30-16:30



Creating inclusive environments for neurodivergent young people

Thursday 29 January

12:15-13:15



Embedding strength and balance in the daily lives of young people

Thursday 29 January

15:30-16:30



Designing an inclusive PE curriculum for every young person

Friday 30 January

12:15-13:15



Creating sustainable enrichment opportunities for young people with SEND

Register for sessions at www.youthsporttrust.org/programmes/inclusion/lead-inclusion-schools/inclusion-2028/inclusion-live-week



**YOUTH
SPORT
TRUST**

CONFERENCE **2026**

*Happy, healthy and
thriving – A new era
through PE, sport and play*



Awards Evening – Tuesday 3 March
Conference – Wednesday 4 March
Telford International Centre



#YSTConference

Future Webinar dates



10am on Zoom - need to register to get the link!

- 3rd Feb 10am <https://youthsporttrust.zoom.us/meeting/register/p-MZdySCQSOA3RTOJjt8rA>
- 22nd April 10am <https://youthsporttrust.zoom.us/meeting/register/8UeuccdbRMKTH4D05wjETQ>
- 25th June 10am <https://youthsporttrust.zoom.us/meeting/register/evMpM6zfQk-FrRfbJFwxeg>