



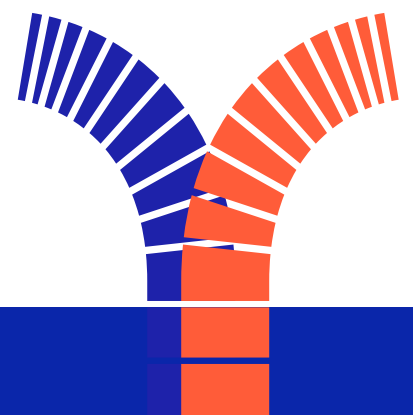
YOUTH
SPORT
TRUST

THE
CLUB



Top 10 Tips for Effective PE Leadership – *Primary*

- 01** Start with purpose
- 02** Align with whole-school priorities
- 03** Champion high-quality PE
- 04** Prioritise inclusion and equity
- 05** Listen and respond to pupils
- 06** Support and develop staff
- 07** Promote a physically active culture
- 08** Plan and evaluate with purpose
- 09** Celebrate and advocate for PE
- 10** Keep evolving



Top 10 Tips for Effective PE Leadership

Primary

Whether you're stepping into the role for the first time or have been leading PE for several years, your priorities will look different – and that's okay. If you're new to the role, your starting point is to get to know your school's context and purpose. That means listening to pupils, staff, senior leaders and families. Your early focus will be on identifying what's already in place, where the gaps are and how PE can play a bigger role in your school's culture and priorities. If you're more experienced, the challenge often shifts to sustaining, evolving and

balancing – making sure your PE, schools sport and physical activity (PESSPA) offer remains high quality, inclusive and responsive to changing needs.

To support this journey, the tips below are ordered to reflect a progressive pathway from laying the foundations of purposeful, inclusive practice to influencing the wider school culture and strategic leadership. Whether you're just starting out or deepening your impact, this framework is here to guide, support and inspire your approach.



01 Start with purpose

Be clear on the purpose of PE in your school. This might mean adopting a physical literacy approach to ensure all children have positive and meaningful movement experiences. Or it could focus on amplifying seldom-heard voices, tackling inequality, or supporting wellbeing. Whatever your "why," make it intentional and widely understood.



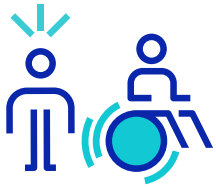
02 Align with whole-school priorities

Ensure your PE vision supports wider school goals such as wellbeing, attendance, behaviour and pupil development. These priorities may be outlined in your School Improvement Plan or shared through conversations with senior leaders. Take time to understand what matters most in your context and explore how PESSPA can actively support and improve these outcomes.



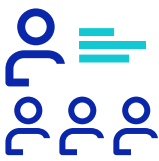
03 Champion high-quality PE

Design and deliver a broad, balanced and inclusive PE curriculum that promotes physical literacy and shows clear progression from EYFS to KS2. It should support all teachers to deliver positive experiences, develop the whole child and capture attainment. Not sure where to start? [Complete PE](#) offers a strong foundation for building a high-quality, holistic curriculum aligned with national guidance.



04 Prioritise inclusion and equity

Make sure all children – regardless of background, ability or confidence – feel included, challenged and valued in PE. This means planning for diverse needs, removing barriers and adapting your approach so every child can experience success. Use language, groupings, equipment and lesson design to ensure all pupils feel safe, supported and like they belong.



05 Listen and respond to pupils

Use youth voice to shape your PESSPA offer. What motivates your pupils and what gets in the way? Create regular opportunities to listen to their experiences and ideas. The [Youth Sport Trust Youth Voice Toolkit](#) is a helpful resource to guide your approach and support you to gather meaningful insight that leads to action.



06 Support and develop staff

Support class teachers to feel confident in delivering high-quality PE through CPD, co-planning, modelling or team teaching. Use staff voice to identify areas of need and build support around them. When teachers feel equipped and supported, PE becomes a shared responsibility – not something to fear – and pupils benefit from greater consistency and quality.



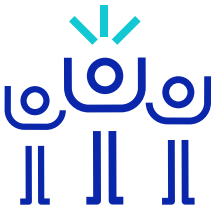
07 Promote a physically active culture

Champion activity beyond PE! Encourage active playtimes, active travel and active learning throughout the school day. Think about how sports leadership roles can be embedded within your PESSPA offer to give pupils ownership and promote physical activity in a meaningful way. Look for opportunities to weave movement into routines, transitions and classroom practice. A whole-school approach to physical activity supports focus, behaviour, wellbeing and engagement helping to meet wider school priorities. You want every child to see movement as a valued and natural part of everyday life.



08 Plan and evaluate with purpose

Use tools like the Primary PE and Sport [Primary Premium Evidencing the Impact Tool](#), [Termly Checklist](#) and the [Self-Reflection Tool](#) to review impact and shape your intent and implementation for the year ahead. Regularly revisit your school's priorities to ensure your PESSPA offer stays aligned, current and consistent. Evaluation is not just for reporting. It is a tool for purposeful, ongoing improvement. Throughout the year, make a habit of recording your actions and priorities. It will give you a clear roadmap for what needs to happen and when for a smoother and more efficient plan for the next academic year.



09 Celebrate and advocate for PE

Raise the profile of PE by sharing pupil achievements, new learning and positive movement moments. Show how PE contributes to wider outcomes like wellbeing, confidence and engagement. Use newsletters, assemblies, displays or social media to help staff, families and the wider school community see its value.



10 Keep evolving

Stay connected to national guidance and local networks to keep your knowledge up to date and your offer relevant. Use CPD, collaboration and professional dialogue to reflect, adapt and grow your practice so it continues to meet the needs of your pupils and your school.

As you evolve, help others on the journey too. Share your effective leadership story with SLT, governors, staff, your local community and with us at the Youth Sport Trust. By showcasing what's working in your setting, you can inspire and support others across the network.

[Click here to view
The Club dashboard.](#)



Acknowledgements: This document is a collaborative effort between the Youth Sport Trust and Katie Chapman, PE Lead and Assistant Head at Little Common School, East Sussex. A big thank you to Katie for her invaluable contribution.



SportPark
Loughborough University
3 Oakwood Drive
Loughborough
Leicestershire LE11 3QF

01509 462900
info@youthsporttrust.org
www.youthsporttrust.org
@YouthSportTrust

Registered charity number **1086915**
Registered company number **4180163**

